

# Remote Connection Manager

Introduction.....	1
Home screen .....	1
Creating Groups.....	3
Including a new computer .....	4
1. Enter the name of the new connection .....	4
2. Select a file (* .csv) to create new simultaneous connections .....	5
3. Import from Active Directory .....	6
Adding, editing or moving a new remote connection .....	6
Creating a printer or other network device .....	9
Opening remote connections.....	10
Restricted access to Manager .....	13
Viewing your remote connections in tabs .....	14
Viewing your remote connections in full screen .....	14
Attach or detach Tabs.....	15
Hotkeys .....	15
Other features of the program .....	15
TERMS AND CONDITIONS .....	16
1. USE OF THE SOFTWARE .....	16
2. PRIVACY POLICY .....	16
3. PROPRIETARY RIGHTS.....	16
4. AUTOMATIC UPDATES .....	17
5. COMPLIANCE WITH LAWS .....	17
6. TERMINATION.....	17
7. INDEMNIFICATION .....	17
8. DISCLAIMER OF WARRANTY .....	17
9. LIMITATION OF LIABILITY.....	18
10. EXCLUSIONS AND LIMITATIONS .....	18
11. ABSENCE OF THIRD PARTY BENEFICIARIES .....	18
CREDITS.....	19

# Remote Connection Manager

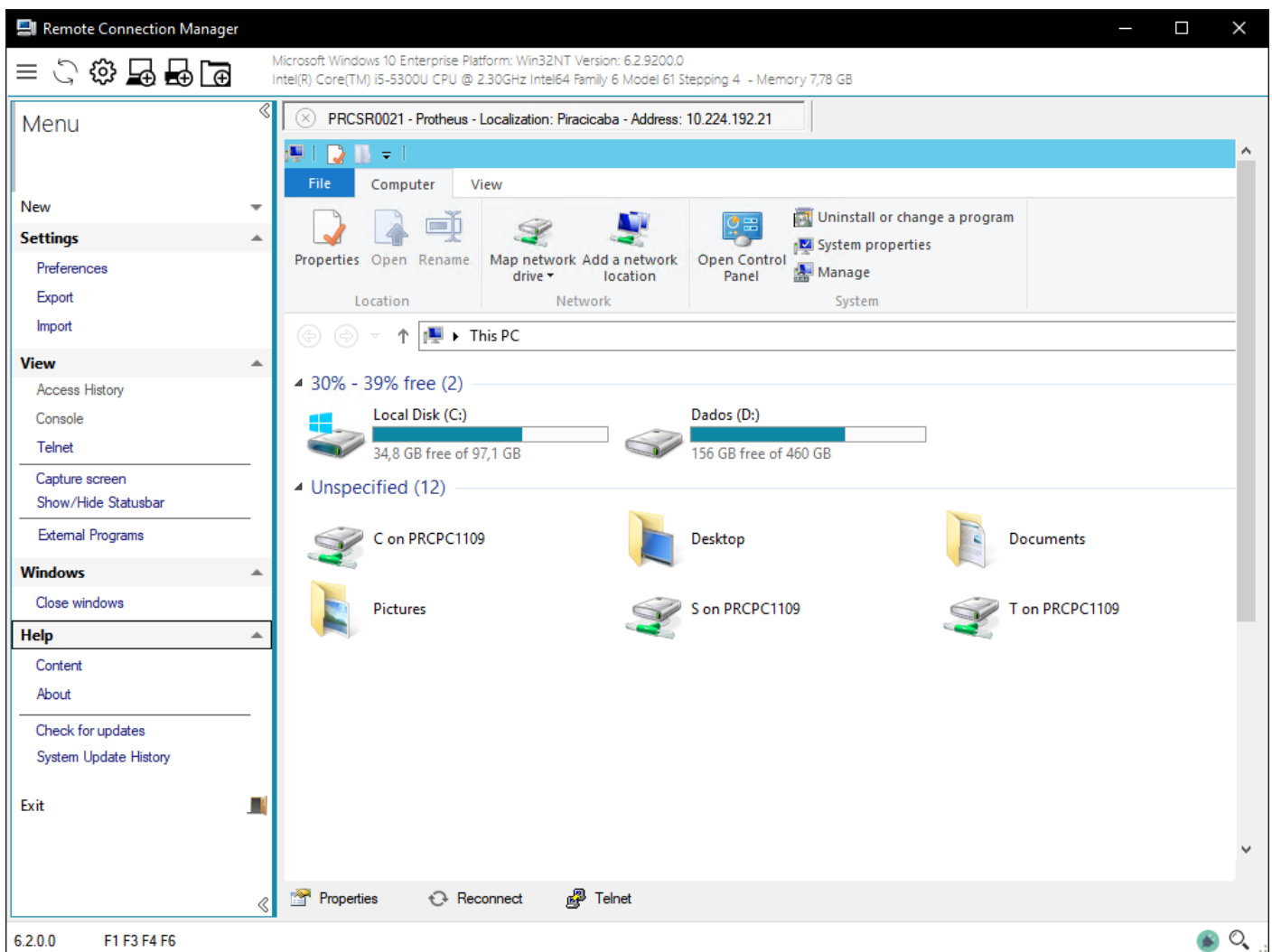
## Introduction

Remote Connection Manager is a free remote access program.

### Features:

- ✓ Manage computers and printers remotely.
- ✓ It is a very easy to use program.
- ✓ It allows multiple simultaneous connections.
- ✓ You can organize devices by groups
- ✓ Create shortcuts on your connections desktop
- ✓ Export installed devices to be used elsewhere, just import the file you exported.
- ✓ Export the device for use with Microsoft's Windows Remote Desktop.
- ✓ You can transfer files
- ✓ Print to a local printer
- ✓ View all disks from the local machine on the remote machine
- ✓ Listen to audio from the remote PC
- ✓ Transferring content from the clipboard.

## Home screen

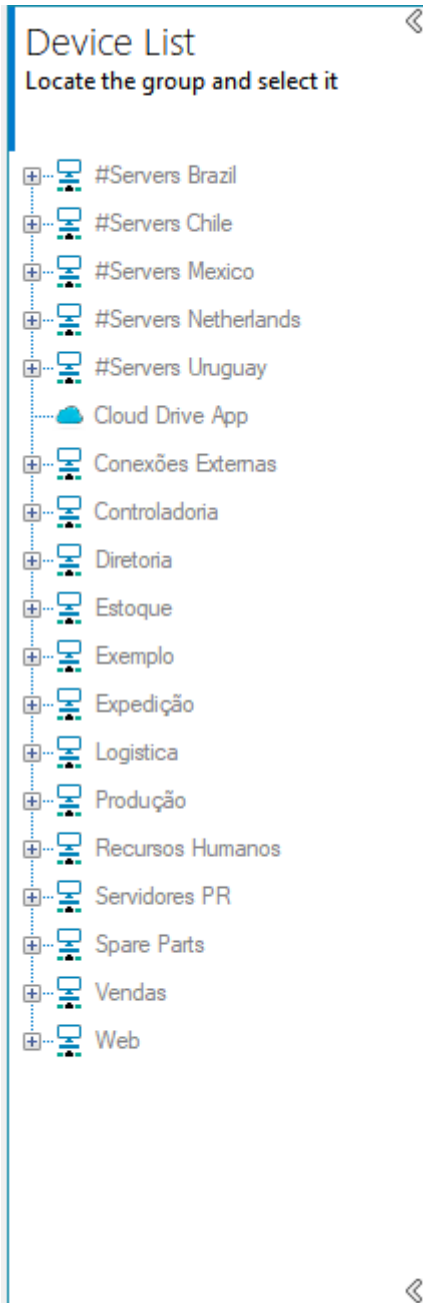


# Remote Connection Manager

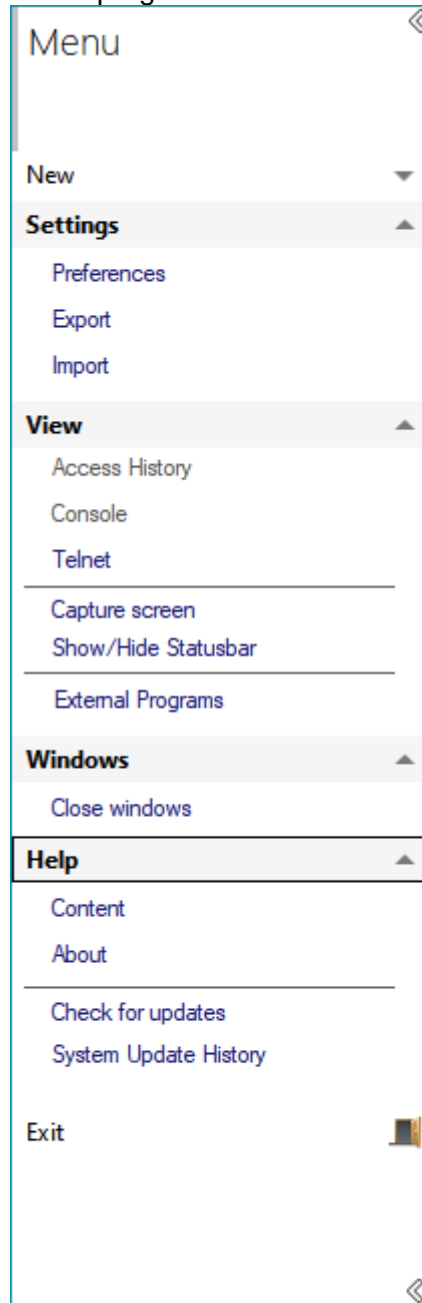
In the program title bar on the left side, there are 6 icons “menu”, “preferences”, “update of the device list”, “add servers”, “add printers” and “add group”.



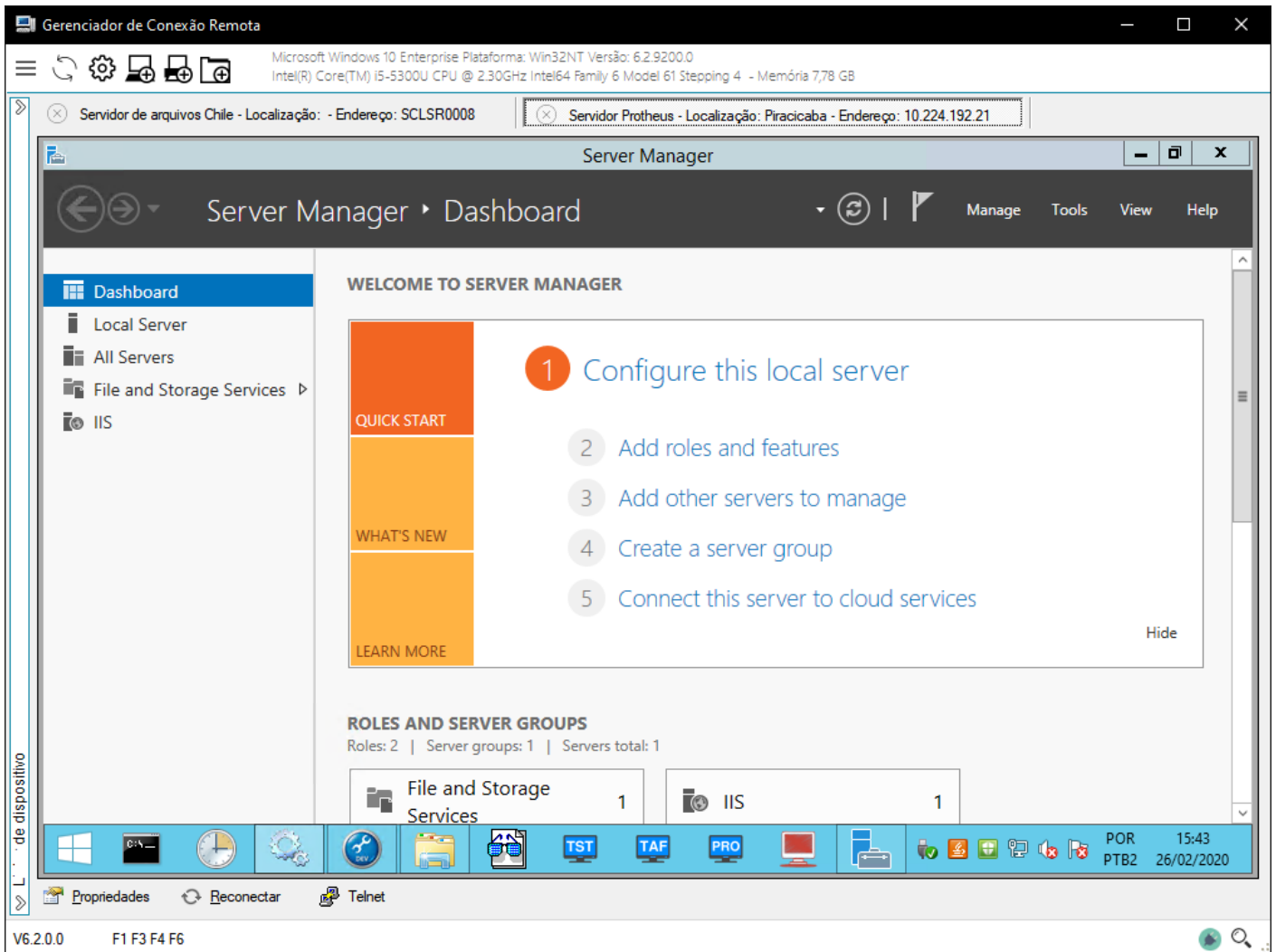
List of devices



List of program menus



# Remote Connection Manager



## Creating Groups

To create a group, go to the menu, click on "New" and then click on "Group", the window below will be displayed.

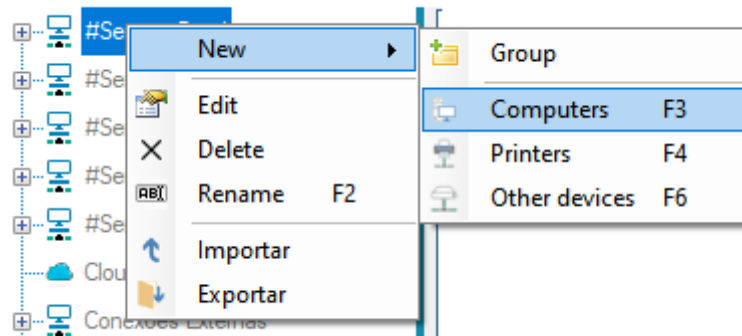


Inclusion is very simple, enter the name of the group and click on the "Save" button.

# Remote Connection Manager

## Including a new computer

To include a new computer, click with the right mouse button on the group, a menu will be displayed as shown in the image below:

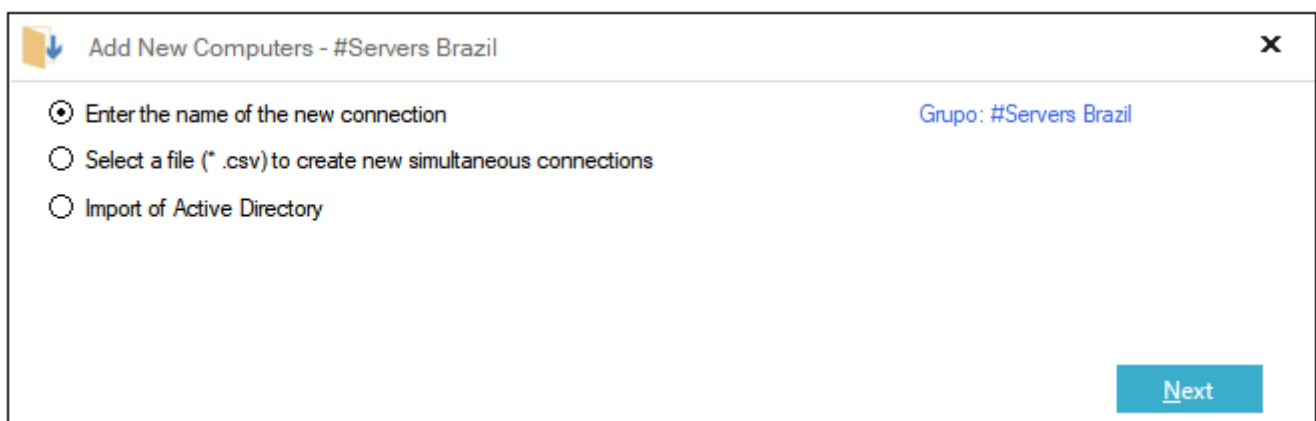


Click on the “New” option then “Computers”

In the window that opens, you will have 3 options:

- ✓ Enter the name of the new connection
- ✓ Select a file (\*.csv) to create new simultaneous connections
- ✓ Import from Active Directory

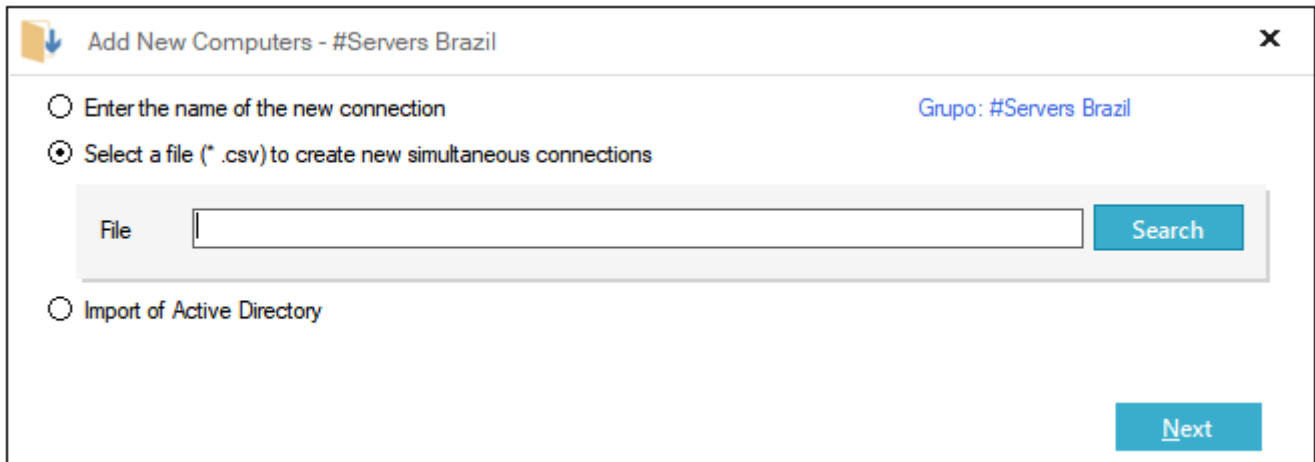
### 1. Enter the name of the new connection

A screenshot of the 'Add New Computers' dialog box. The title bar reads 'Add New Computers - #Servers Brazil'. The dialog contains three radio button options: 'Enter the name of the new connection' (selected), 'Select a file (\*.csv) to create new simultaneous connections', and 'Import of Active Directory'. On the right side, it says 'Grupo: #Servers Brazil'. A blue 'Next' button is located at the bottom right.

With this option you will be directed to the configuration screen, where you will fill with the requested information, fields in red are mandatory.

# Remote Connection Manager

## 2. Select a file (\* .csv) to create new simultaneous connections



With this option, you can import a text file of the CSV type, according to the layout below:

The column positions are:

Field	Type
tipo	Char
endereco	Char
portardp	Number
titulo	Char
localizacao	Char
domínio	Char
usuário	Char

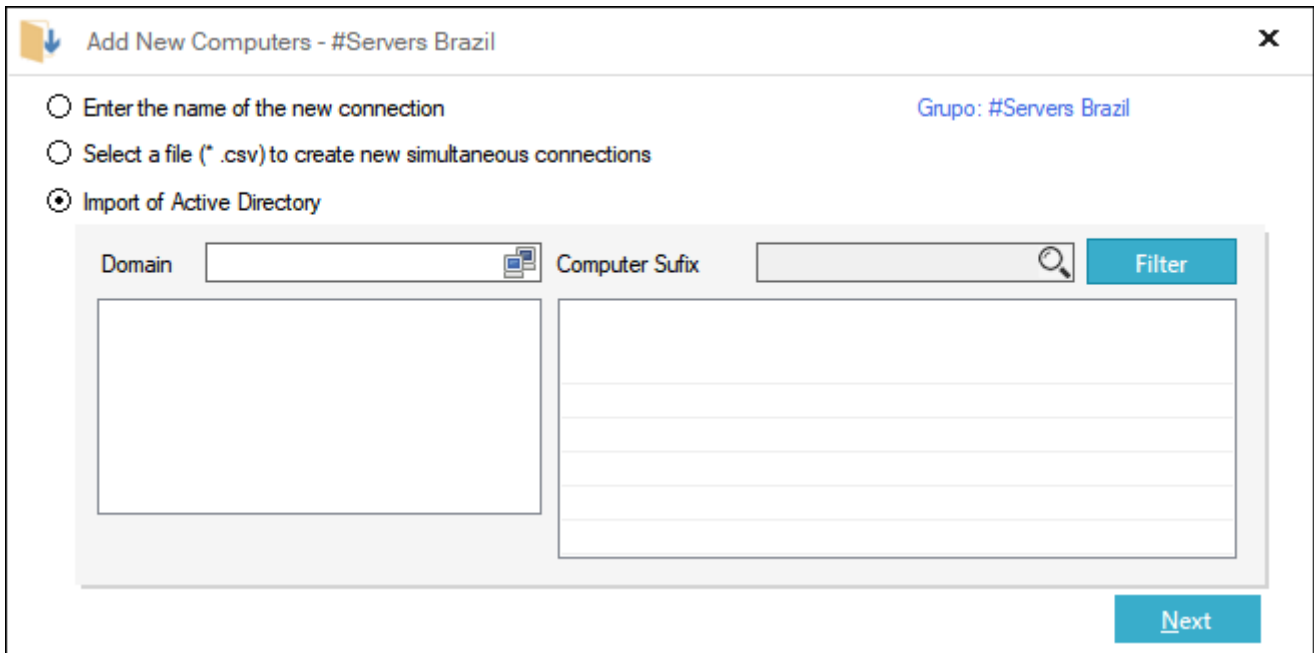
Separate with a semicolon, as shown in the image below, the first column being the header.

```
0          10          20          30          40          50          60          70
1 tipo;endereco;portardp;titulo;localizacao;dominio;usuario
2 Impessoras;10.224.193.98;;LaserJet Color M570DN;PRCPR0028;;
3 Impessoras;10.224.193.97;;Lexmark T654DN;PRCPR0047;;
4
```


It is recommended to use the "Import" option located in the "Settings" menu.

# Remote Connection Manager

## 3. Import from Active Directory



With this option, you can search your network for the machine you want to connect to.


Enter the domain (it is not mandatory to inform, if it is empty it will be searched in the entire network by domains) and click on the icon  to search your network.

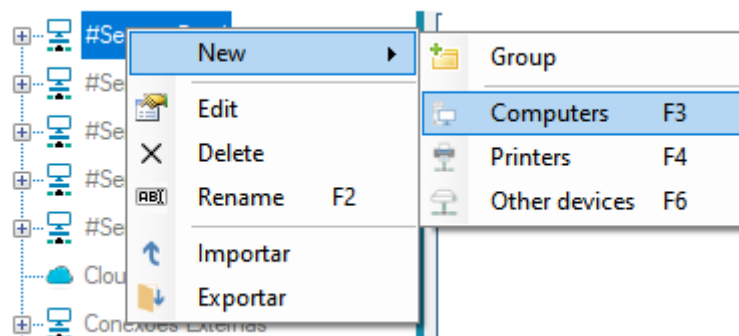
To find the computers on your network, you either click on your domain name, or you click the "Filter" button.

The computer (s) will be displayed, select one and click the "Next" button.

You will be redirected to the new connection registration screen.

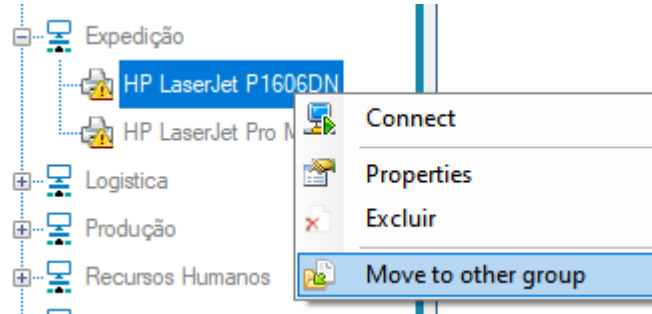
## Adding, editing or moving a new remote connection


The inclusion and editing access is done through the menu  or by right-clicking on the existing group.

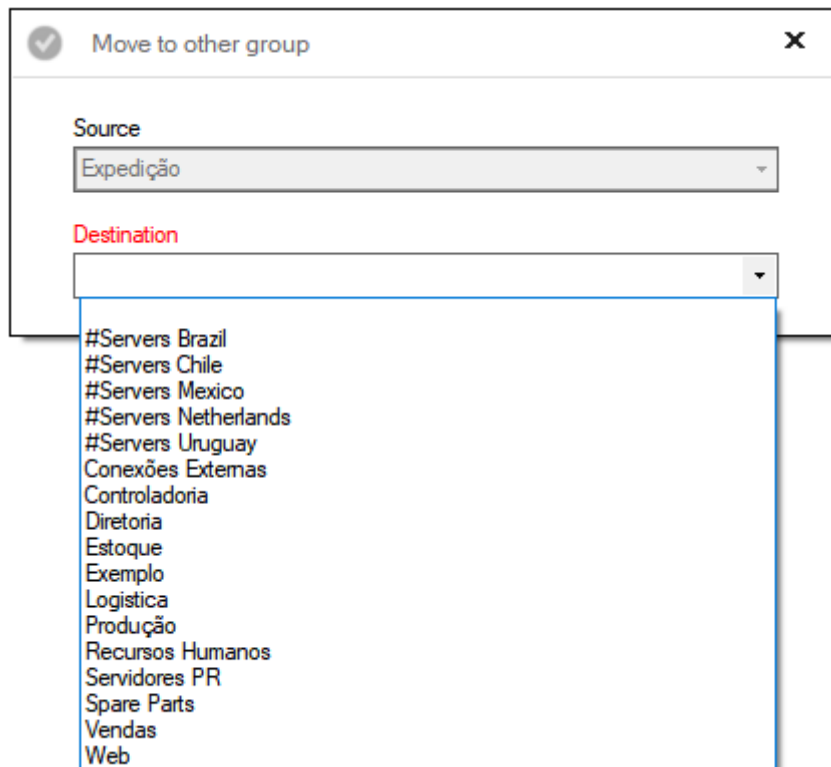


# Remote Connection Manager

To move a remote connection from one group to another, right click on it and select the option "Move to another group".



Inform the destination group and then click on the "Confirm" button 

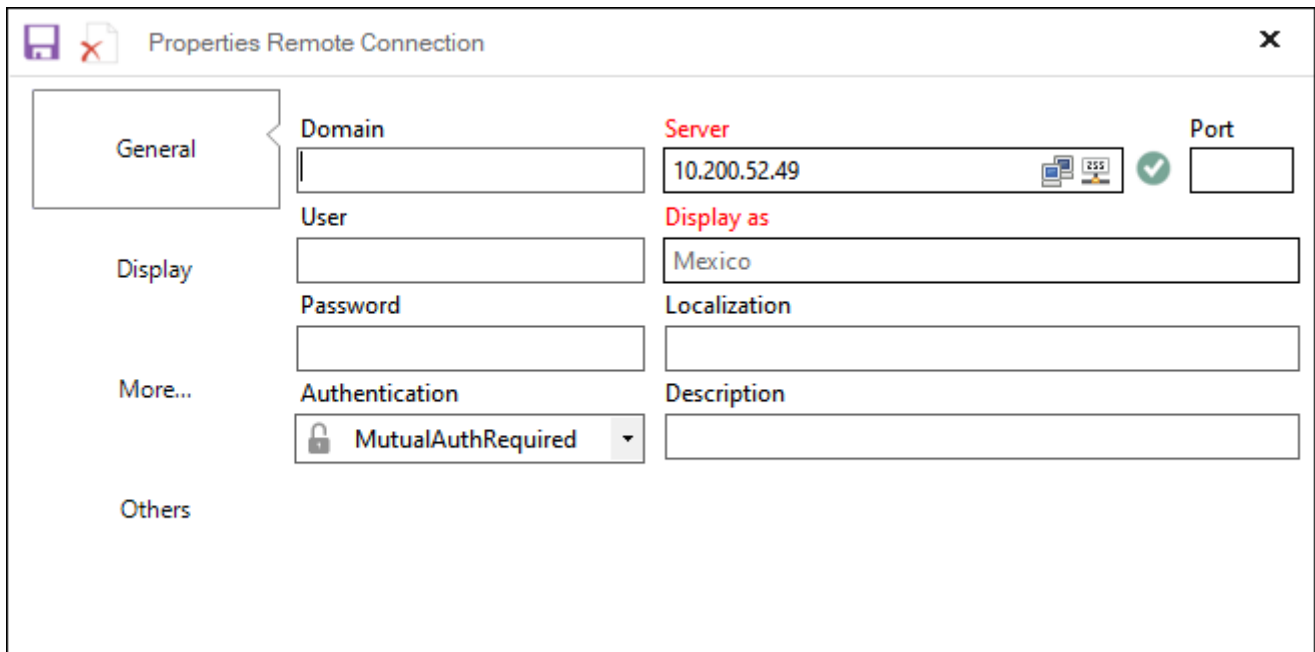




# Remote Connection Manager

The registration / editing screen has some mandatory fields, as shown in the images below, after completing the filling, click on the “Save” button.

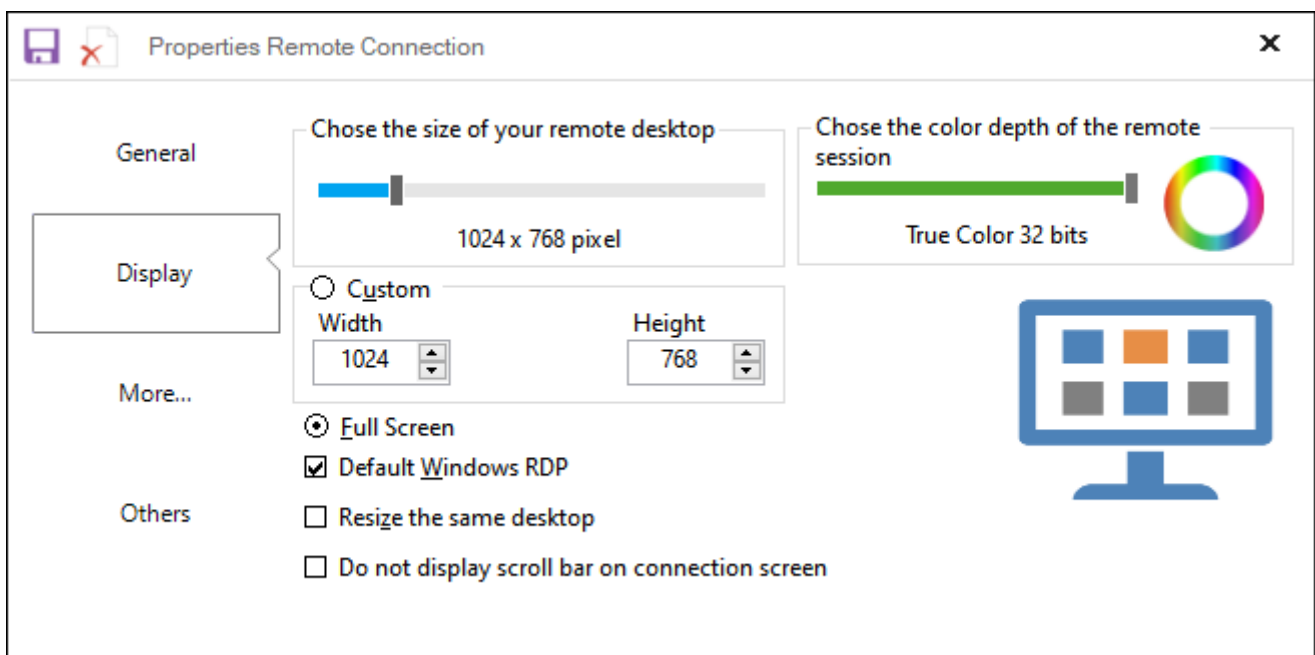
## Authentication options



The screenshot shows the 'Properties Remote Connection' dialog box with the 'General' tab selected. The fields are as follows:

Field	Value
Domain	Server
Port	10.200.52.49
User	Mexico
Password	Localization
Authentication	MutualAuthRequired
Description	

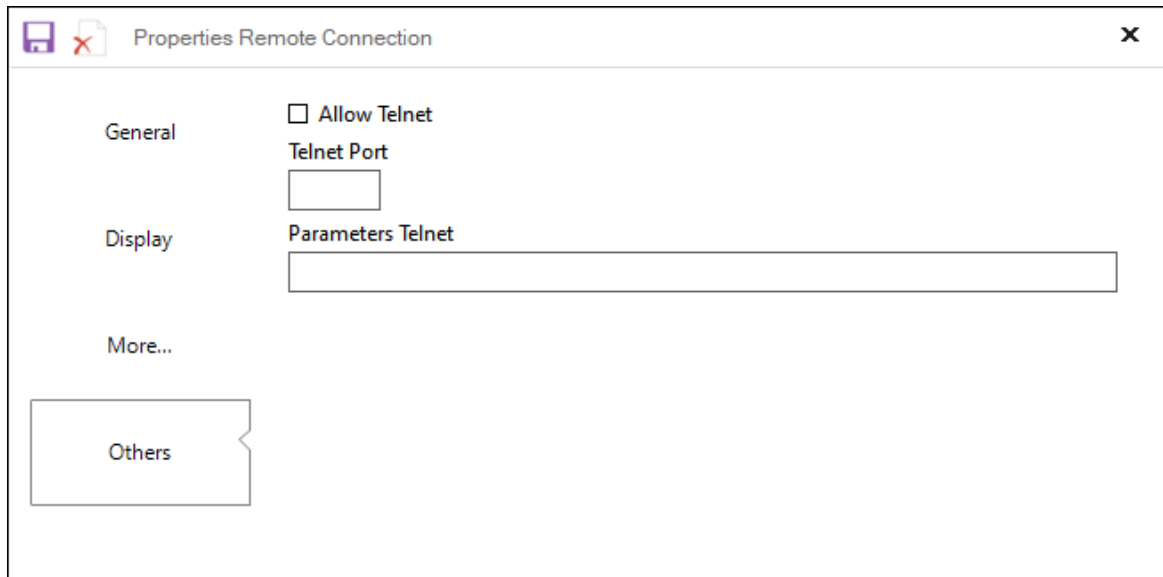
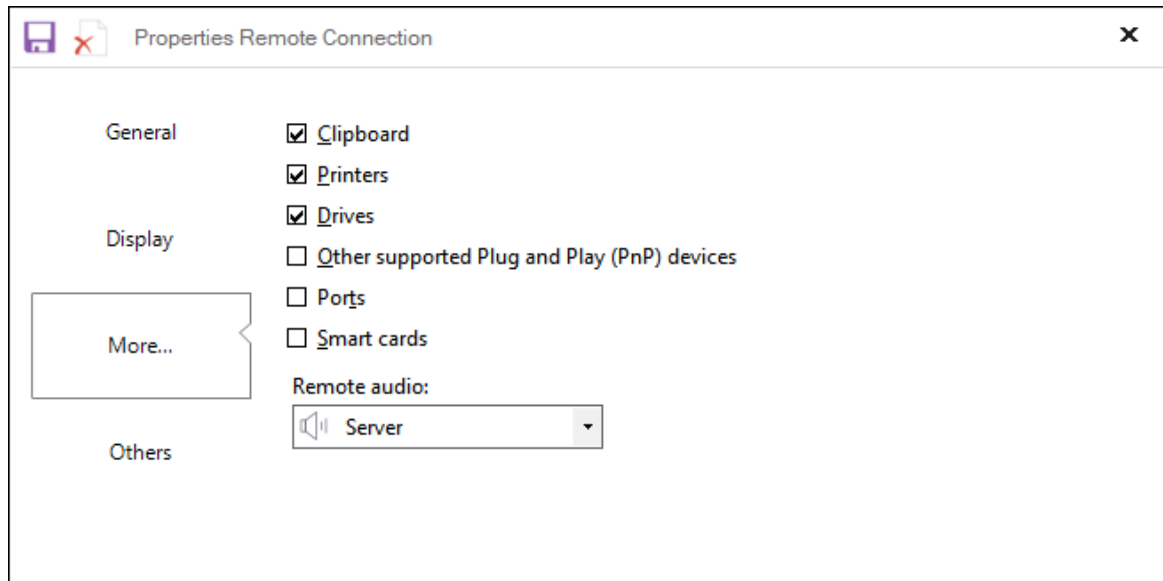
- ✓ None - Authentication is not required for the client and the server.
- ✓ MutualAuthRequested - The client and the server must be authenticated. The request does not fail if the server is not authenticated.
- ✓ MutualAuthRequired - The client and the server must be authenticated. If the server is not authenticated, the application will receive an IOException with an internal ProtocolViolationException exception that indicates that mutual authentication has failed.



The screenshot shows the 'Properties Remote Connection' dialog box with the 'Display' tab selected. The settings are as follows:

Setting	Value
Chose the size of your remote desktop	1024 x 768 pixel
Chose the color depth of the remote session	True Color 32 bits
Custom	Width: 1024, Height: 768
Full Screen	<input checked="" type="radio"/>
Default Windows RDP	<input checked="" type="checkbox"/>
Resize the same desktop	<input type="checkbox"/>
Do not display scroll bar on connection screen	<input type="checkbox"/>

# Remote Connection Manager



## Creating a printer or other network device

The creation of printers or other devices are triggered when we click with the right mouse button on the group or through the "Menu \ New \".



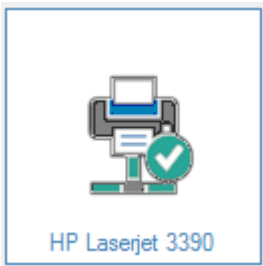
Ou

# Remote Connection Manager



The screen of Printers and other devices is the same, but if the type is the same as “printers” the deal will be different from other devices.

For example, identify whether a printer is connected or not. If the printer is connected, the icon will be green, otherwise it will be gray.



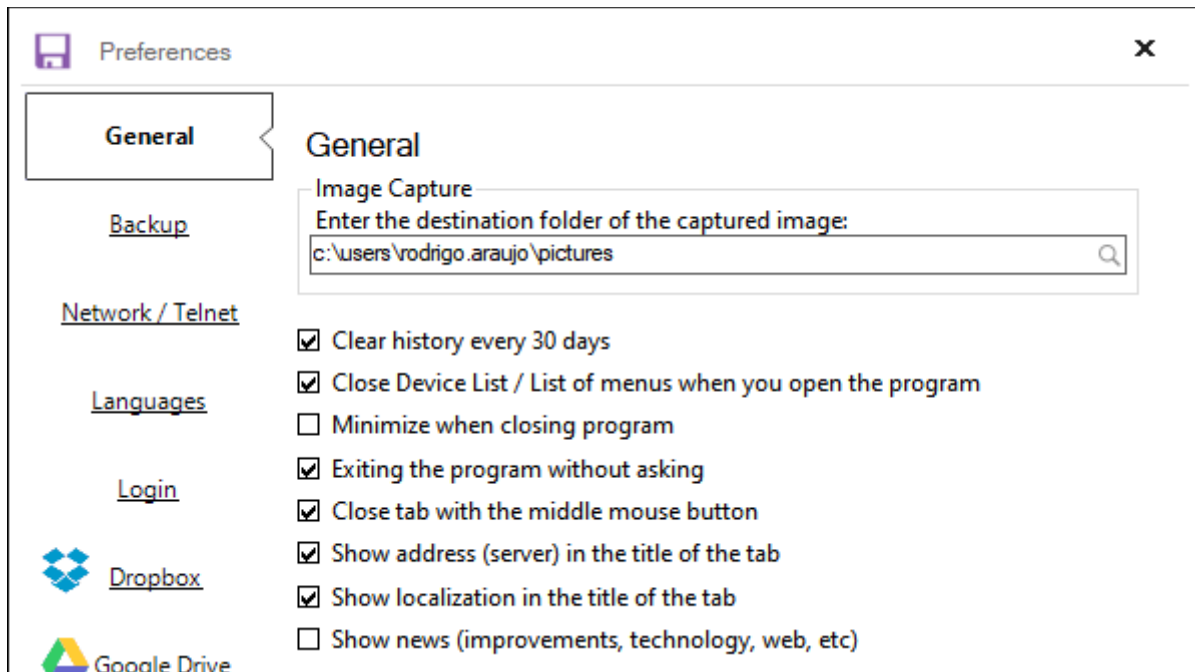
## Opening remote connections

To open your remote connection, you can right-click on the computer and choose between the option "Connect" or double click.

# Remote Connection Manager

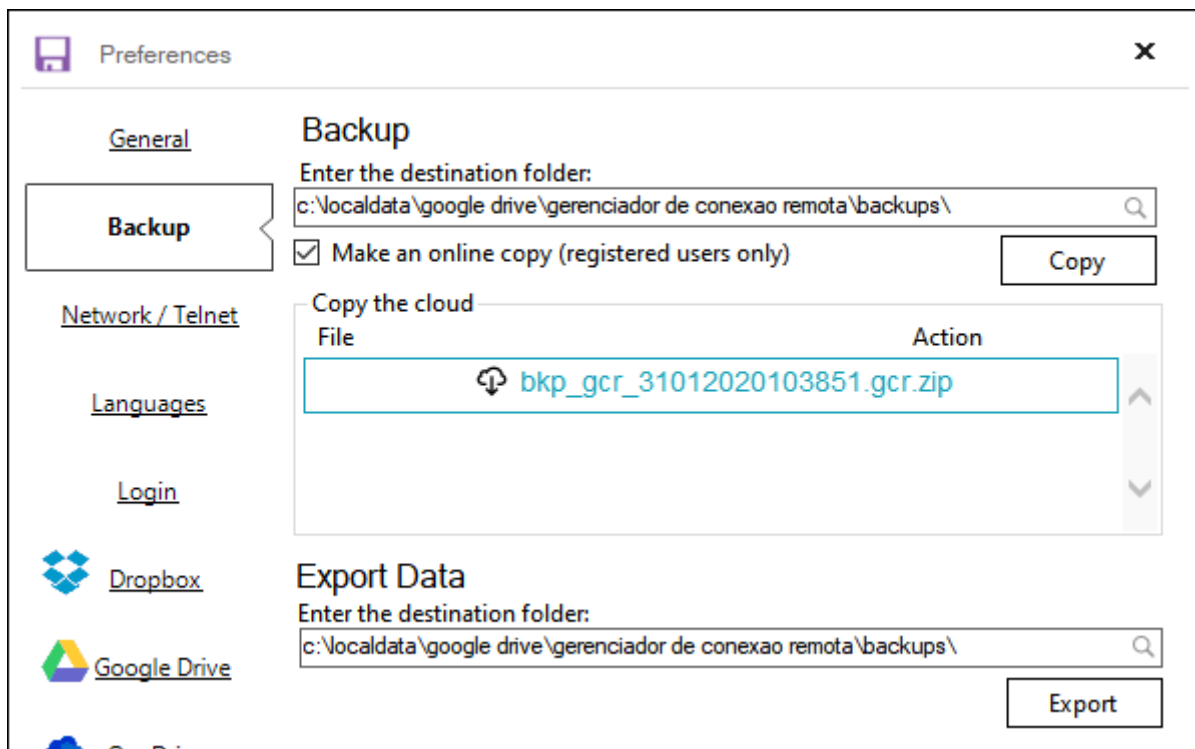
## Preferences

Preferably, it is possible to make some customizations in the program, browse the side buttons for more details.



The backup copy allows you to save a backup copy of the database to disk with all registered devices.

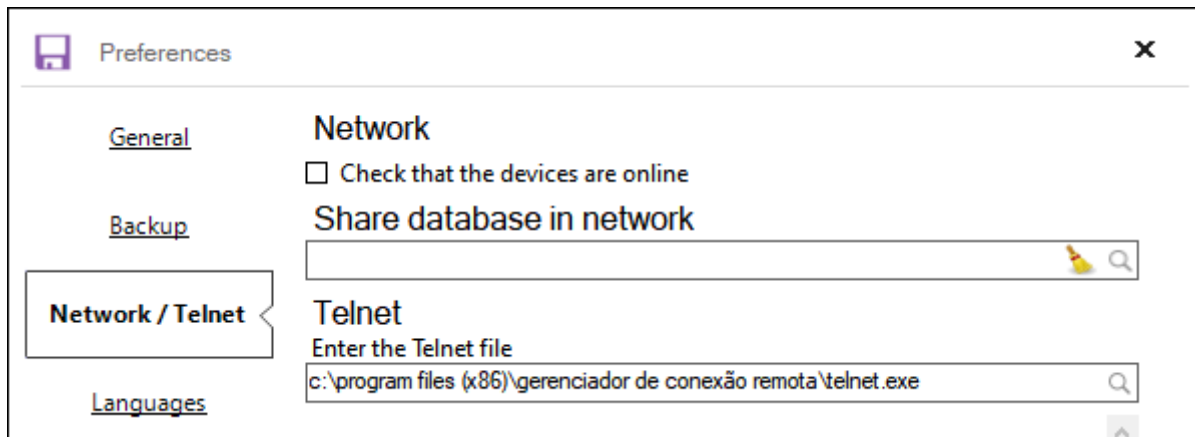
To export the registered devices to another database, inform where the file will be saved for later import.



# Remote Connection Manager

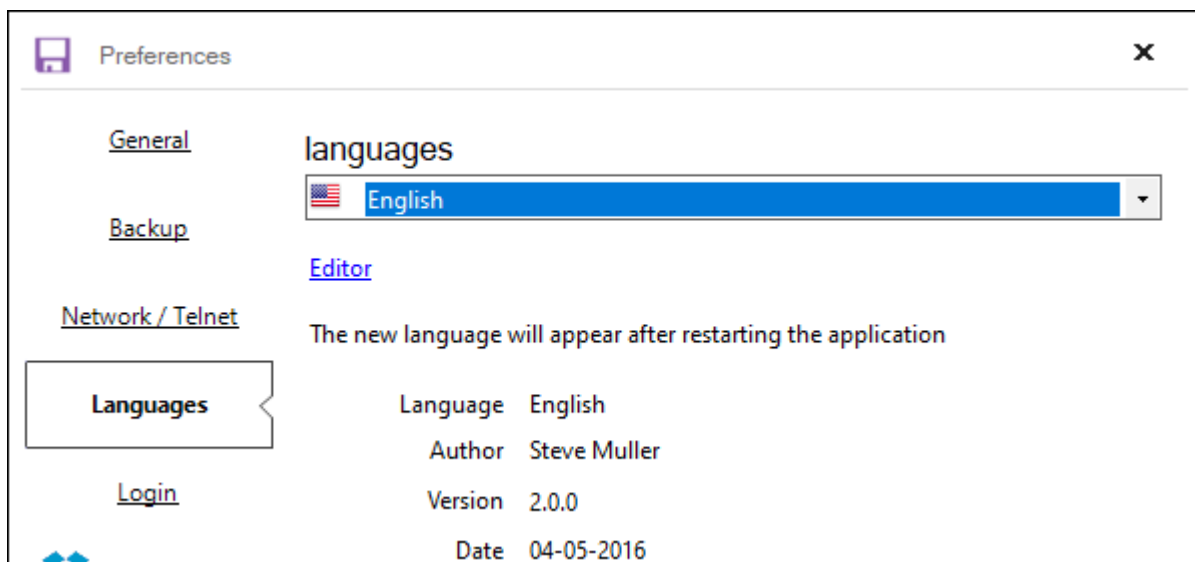
To find out if the devices are online, check the option "Check if the devices are online", with this option checked, the device icon will signal whether it is online or offline.

The option to share the application's database was created, all users who access it can open the same database.



By default, the program provides **TELNET** software, but if necessary, it can inform other software.

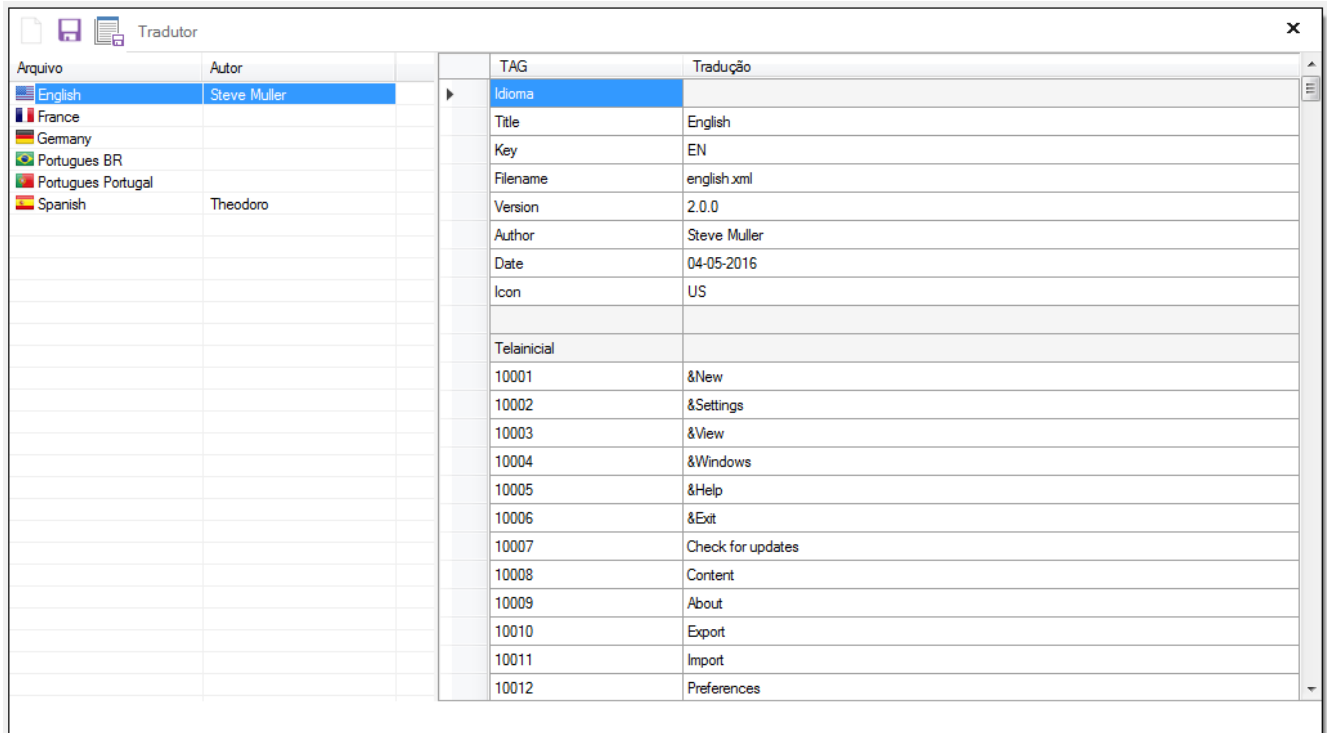
This program has three predefined languages: Portuguese (Brazil), Spanish and English, but can be translated into any other language.



When changing the language, it is necessary to restart the application so that it translates correctly.

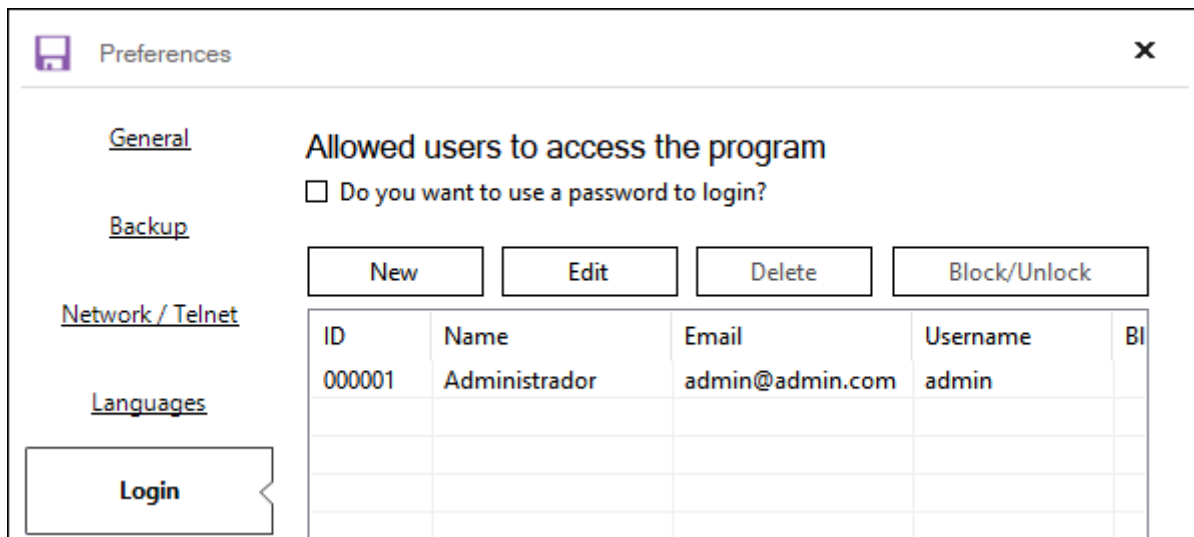
# Remote Connection Manager

This program has its own editor for translation




## Restricted access to Manager

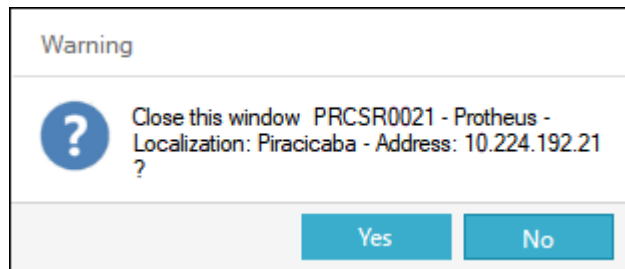
It is possible to define username and password, the default user is admin, and the password is **admin**.



# Remote Connection Manager

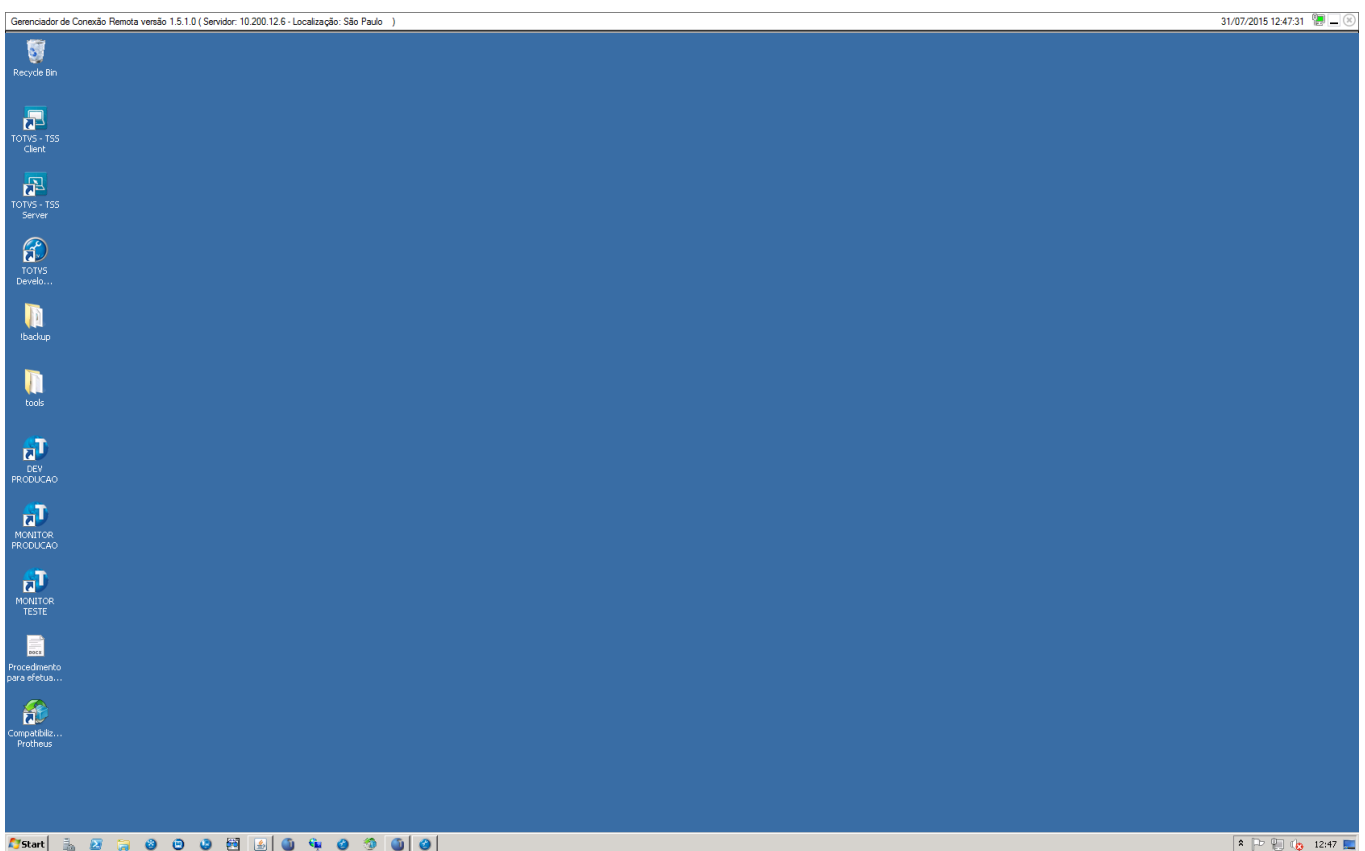
## Viewing your remote connections in tabs

The program allows multiple remote connections, in which you can select them when you click on its tab, to close the connection, click on your connection icon .



## Viewing your remote connections in full screen

To view in full screen, either set in the properties of the remote connection or click with the left button and drag the tab in any direction and a screen will open as shown in the image below:



# Remote Connection Manager

## Attach or detach Tabs

To detach, click on the tab and drag to any point on the screen and to attach the main screen, just close the window of the computer that is detached.

## Hotkeys

F1 - Help

F3 - Add new equipment

F4 - Add new printer

F6 - Add new device

Ctrl + F9 - Capture image

Ctrl + Del - Close all windows

Ctrl + Shift + P - Preferences

Ctrl + Shift + R - Quick Search

## Other features of the program

- ✓ Rename your connection name without having to enter the properties, just click slowly on it or by pressing the F2 key.
- ✓ Move your connection from one group to another
- ✓ Searching for the device, at the bottom right of the screen, has the option to search for a registered device.



# Remote Connection Manager

## TERMS AND CONDITIONS

This program ("Software") is free software. You can use and redistribute it for free, without modifying it in any way.

This program is distributed WITHOUT ANY WARRANTY, either implicit or explicit.

This program is protected by copyright laws and cannot be sold or modified without the author's explicit and written permission.

By downloading, installing or using this Software, you agree to the following terms and conditions ("Terms and Conditions").

### 1. USE OF THE SOFTWARE

The Software is made available for personal or commercial use.

### 2. PRIVACY POLICY

Protecting users' privacy is very important to us. As a condition of downloading the Software and using it, the user agrees to the terms of the Privacy Policy.

Our software does not collect any personal information for use.

### 3. PROPRIETARY RIGHTS

The user acknowledges that: the Software contains proprietary and confidential information protected by intellectual property and other relevant laws

The user agrees not to do or allow third parties to do the following:

- (i) Copy, sell, license, distribute, transfer, modify, adapt, translate, prepare derivative works, decompile, reverse engineer, disassemble or attempt to obtain the source code of the Software, unless otherwise permitted;
- (ii) Take any action to circumvent or cancel the security rules or use of content provided, implemented or imposed by any functionality (including, without limitation, the digital rights management functionality) contained in the Software;
- (iii) Use the Software to access, copy, transfer, transcode or retransmit content that violates any law or any third party right, or
- (iv) remove, hide or alter the copyright notices, trademarks or other proprietary rights notices of VLS Web or any Third Party affixed to or contained in the Software or accessed in conjunction with or through the Software.

# Remote Connection Manager

## 4. AUTOMATIC UPDATES

The Software may communicate with our servers periodically to check for available updates, such as bug fixes, patches, enhanced functions, missing plug-ins and new versions (hereinafter collectively referred to as "Updates").

By installing the Software, you agree to automatically request and receive Updates.

## 5. COMPLIANCE WITH LAWS

The user agrees to comply with all local laws and regulations regarding the download, installation and use of the Software.

## 6. TERMINATION

The user may terminate these Terms and Conditions at any time by permanently deleting the Software. The user's rights will be automatically and immediately terminated without prior notice and if he breaches any provision of these Terms and Conditions. In such case, the user must immediately delete the Software.

## 7. INDEMNIFICATION

The user agrees to exempt us from liability with respect to any claim, process or legal action arising out of the use of the Software, or related to it, or due to the user's breach of these Terms and Conditions, including all liabilities or expenses arising from any claim, loss, damage, process, judgment, litigation or attorney's fee of any nature, and indemnify them.

## 8. DISCLAIMER OF WARRANTY

The user expressly understands and agrees that:

a) The use of the software by the user is at their own risk. The software is provided "as is" and without warranty of any kind. To the maximum extent permitted by law, we explicitly disclaim all warranties and conditions of any nature, whether express or implied, including, but not limited to, the implied warranties and conditions of commercial suitability, suitability for any specific purpose and non-infringement .

b) We do not grant any type of guarantee

- (i) that the software will meet the user's requirements;
- (ii) that the software will be free of errors or failures;
- (iii) security, reliability, timely operation or performance of the software; is that
- (iv) possible errors in the software may be corrected according to the author's availability.

# Remote Connection Manager

c) All content or material downloaded or otherwise through the software is done at the user's own risk. The user is solely responsible for data loss or damage to his computer system or other device as a result of downloading any content or material.

d) No part of the software shall be used in the operation of nuclear installations, life support systems, emergency communications, aircraft navigation or communication systems, air traffic control systems or any other related activities in which the software failure cause death, personal injury or physical or environmental damage of any kind.

## 9. LIMITATION OF LIABILITY

You understand and expressly agree that we assume no responsibility for any direct, indirect, accidental damages including, but not limited to, damages for lost profits, loss of credibility, loss of data or other intangible losses (even if we have been notified of it ( s) the possibility of such damages) resulting from:

- (i) Use or inability to use the software;
- (ii) Inability to use the software to access content or data;
- (iii) Cost of acquisition of substitute products or services;
- (iv) Unauthorized access to or changing user data or changes; or
- (v) Any other matter related to the software. The abovementioned limitations shall apply despite the ineffectiveness of the essential purpose of any limited judicial remedy and to the maximum extent permitted by law.

## 10. EXCLUSIONS AND LIMITATIONS

Nothing in this agreement is intended to exclude or limit any condition, warranty, right or liability that cannot be legally excluded or limited.

Some jurisdictions do not allow the exclusion of certain warranties or conditions or the limitation or exclusion of liability for loss or damage caused by negligence, breach of contract or implied terms, or accidental or consequential damages. Therefore, only the limitations mentioned in the sections above that are legal in the user's district will be applied, and the responsibility of VLS Web and third parties will be limited to the limits provided by law.

## 11. ABSENCE OF THIRD PARTY BENEFICIARIES

The user agrees that, except when provided otherwise in these Terms and Conditions, no third party will benefit from these Terms and Conditions.

# Remote Connection Manager

## CREDITS

This program was developed by Rodrigo Araujo, to get in touch for questions, complaints or suggestions, send an email to [rodrigolparaujo@gmail.com](mailto:rodrigolparaujo@gmail.com)